

Carefully Crafted



K-Pack® II

Hypodermic needle dedicated
to the pharmaceutical industry

Needle designed for pharma industry

Single packed needle

The K-Pack II Needle has been designed to allow for both manually and fully automated insertion of the needles into a secondary packaging together with the medication to be injected (delivered in syringes, vial, ampoule).

Therefore, each needle is individually packed in an ergonomically shaped hard cap and case.

Colour-coded label

The colour-coded sealing label provides instant identification of the needle gauge, facilitates inventory control and can be used for inline identification with vision systems. The product is closed with tamper evident label. The K-Pack II Needle is very easy to open by the user.

Economic

The K-Pack II Needle has been designed to occupy minimal space in your packaging. The product configuration is suited for automated handling. Its ergonomic shape allows correct product orientation and its flange provides support of the product on feeding systems. The K-Pack II Needle's round shape facilitates pick-and-place by suction pads. The product has a clear and simple labelling.

Terumo-Thin Wall for increased flow rates

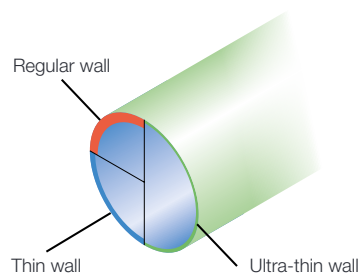
The Terumo-Thin Wall needles allow you to choose a smaller, more comfortable gauge size with increased flow rates over Regular and Thin Walled needles. Additionally, injection fluids with a high viscosity can be injected more smoothly than with standard needles.

Thin Wall in short case

These Thin Wall needles in short case configuration guarantee minimal space occupancy in your secondary packaging. They also ensure a smooth injection of more viscous materials and are currently available in 3 different sizes: 27G, 29G and 30G.

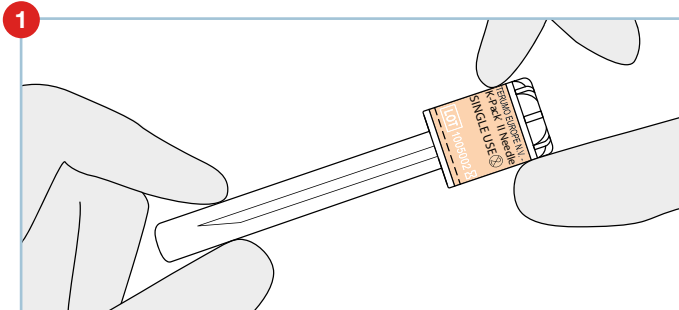
Minimal patient discomfort

The needle's ultra-sharp LANCET POINT decreases penetration resistance, which results in less pain and trauma for the patient.

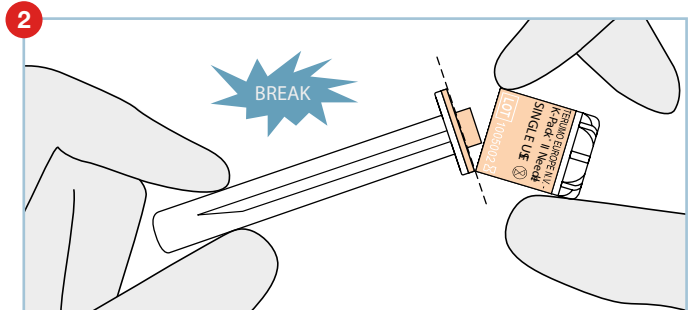


How to open K-Pack® II

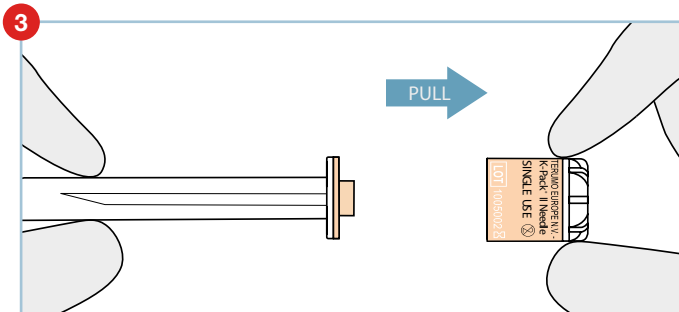
Opening Method 1



Grip needle firmly at both ends

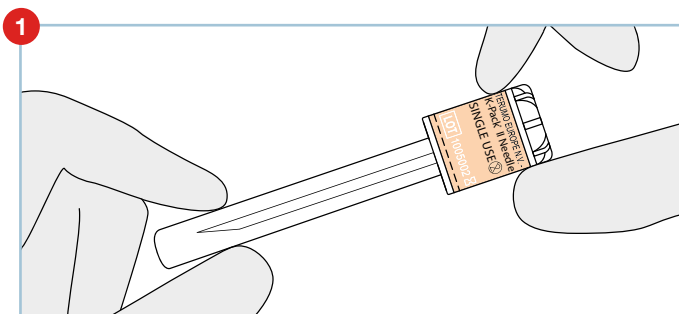


Make a slight breaking movement (at the perforation) on both ends

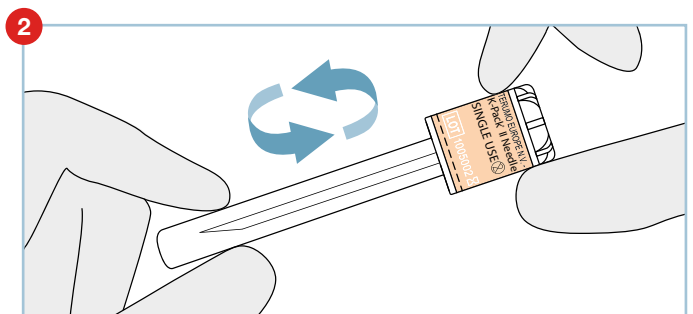


Pull the cap from the needle

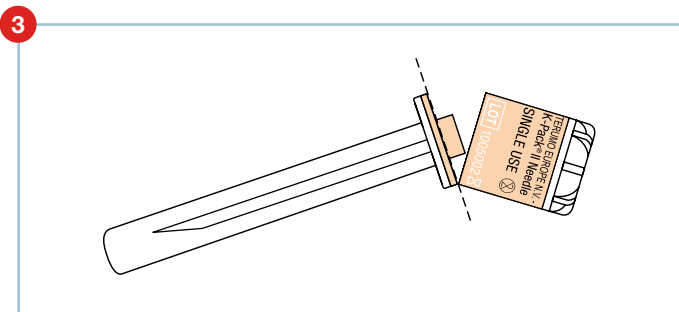
Opening Method 2



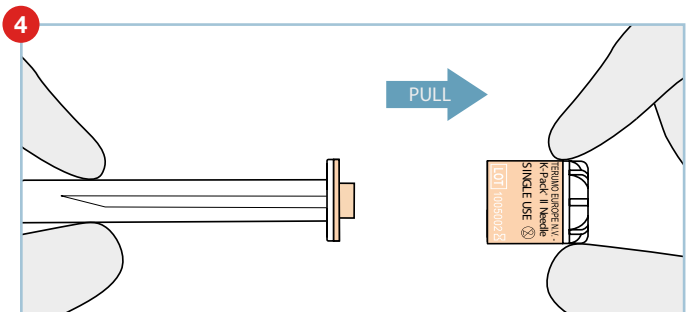
Grip needle firmly at both ends



Turn or twist the cap (clockwise or counter clockwise)



The label will break at the perforation lines



Pull the cap from the needle

There are no official instructions for use.

General Specifications

| Specification | Description |
|-------------------------|---|
| Needle Point | Lancet point (3-bevel) |
| Cannulae | Stainless steel X5CrNi 18-10 |
| Hub | Polypropylene |
| Individual packaging | Hard cap and case with tamper-evident label |
| Shipping carton | Bulk 5000 pcs |
| Method of sterilization | Ethylene Oxide |
| EN ISO 7864 | Sterile hypodermic needles for single use |
| Shelf Life | 5 years |



The device has no components made of PVC/DEHP.

The device has no components made of natural rubber latex.

Ordering Information

| Code | Colour | Diameter | | Needle length | Wall thickness |
|--------------|--------|----------|------|----------------|------------------------|
| | | Gauge | mm | | |
| KN-1838SB | Pink | 18G | 1.2 | 40 mm (1 1/2") | Thin Wall |
| KN-1938RB | Ivory | 19G | 1.1 | 40 mm (1 1/2") | Thin Wall |
| KN-2038RB | Yellow | 20G | 0.9 | 40 mm (1 1/2") | Thin Wall |
| KN-2138RB | Green | 21G | 0.8 | 40 mm (1 1/2") | Terumo - Thin Wall |
| KN-2150RB | Green | 21G | 0.8 | 50 mm (2") | Regular Wall |
| KN-2232RB | Black | 22G | 0.7 | 30 mm (1 1/4") | Terumo - Thin Wall |
| KN-2238RB | Black | 22G | 0.7 | 40 mm (1 1/2") | Terumo - Thin Wall |
| KN-2325RB | Blue | 23G | 0.6 | 25 mm (1") | Terumo - Thin Wall |
| KN-2332RB | Blue | 23G | 0.6 | 30 mm (1 1/4") | Terumo - Thin Wall |
| KN-2516RB05 | Salmon | 25G | 0.5 | 16 mm (5/8") | Terumo - Thin Wall |
| KN-2525RB | Orange | 25G | 0.5 | 25 mm (1") | Terumo - Thin Wall |
| KN-2610RB | Brown | 26G | 0.45 | 10 mm (3/8") | Regular Wall |
| KN-2616RB | Brown | 26G | 0.45 | 16 mm (5/8") | Regular Wall |
| KN-2713RB | Grey | 27G | 0.4 | 12 mm (1/2") | Regular Wall |
| KN-2713RBKBT | Grey | 27G | 0.4 | 12 mm (1/2") | Thin Wall - Short Case |
| KN-2719RB | Grey | 27G | 0.4 | 20 mm (3/4") | Regular Wall |
| KN-2719RBT | Grey | 27G | 0.4 | 20mm (3/4") | Thin Wall |
| KN-2908RBKBT | Red | 29G | 0.33 | 8 mm (5/16") | Thin Wall - Short Case |
| KN-2913RB | Red | 29G | 0.33 | 12 mm (1/2") | Regular Wall |
| KN-2913RBKBT | Red | 29G | 0.33 | 12 mm (1/2") | Thin Wall - Short Case |
| KN-3013RB | Yellow | 30G | 0.3 | 12 mm (1/2") | Regular Wall |
| KN-3013RBKBT | Yellow | 30G | 0.3 | 12 mm (1/2") | Thin Wall - Short Case |

For other needle sizes, please contact us.